

A tall, multi-story building with a light-colored stone or brick facade and many windows, set against a dark blue sky. A large evergreen tree is in the foreground to the left, and bare trees are visible to the right. The bottom of the image features a blue and yellow diagonal gradient.

MOHN HALL

FIRST-YEAR RESIDENCE HALL

Furniture Measurements

Item	Dimensions (in inches)
Mattress	79 x 36 (Standard Twin XL mattress)
Fully Lofted Bed	76 (height), 66 (under height) x 85 (under width)
Desk	42.7 x 28
Shelf	42.7 x 13
Closet	Total Length: 164, Height: 77.5, Hanging: 45 x 23, Closed: 14 x 14

Doubles - X01 Rooms



Doubles - X02 Rooms



Doubles - X03 Rooms



Doubles - X04 Rooms



Doubles - X05 Rooms



Doubles - X06 Rooms



Doubles - X07 Rooms



Doubles - X08 Rooms



Doubles - X09 Rooms



Doubles - X10 Rooms



Doubles - X11 Rooms



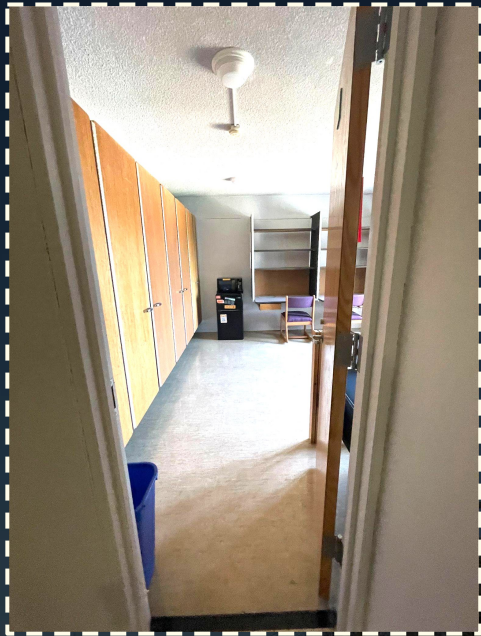
Doubles - X12 Rooms



Doubles - X13 Rooms



Doubles - X14 Rooms



Triples - X15 Rooms



Single - X16 Rooms



ST. OLAF COLLEGE

WELCOME TO THE HILL!



Residence Life

Tomson Hall 148
1520 St. Olaf Avenue
Northfield, MN 55057

P 507-786-3615
E housing@stolaf.edu

